

Richmond Park family quiz 3 *Answers*

More fun questions to test your knowledge of the wildlife, history, features and people associated with Richmond Park, London's favourite National Nature Reserve (*1pt per answer unless indicated otherwise*)

*A royal water cistern, helicopters and the Queen Mum...
all in Richmond Park!*



Picture: Max Lankester



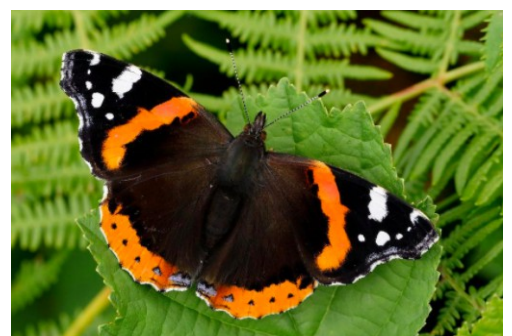
1. Beneath the odd building above left (located in Conduit Wood, near Richmond Gate) are the remains of a water cistern/spring that dates back to around 1500 and was built to supply water to a royal palace. Do you know which palace? *A: Richmond Palace: 1pt.*
2. As many will know from the news media, a field hospital has been installed in New York's Central Park in response to the Covid-19 Pandemic. As NY City's premier park, is Central Park bigger or smaller than Richmond Park? *A: Central Park is smaller, 341 hectares (843 acres) 1pt* (Above right, Richmond Park aerial view:
3. Talking of sizes, is Richmond Park: a) 355 hectares (877 acres); b) 655 hectares (1619 acres); or c) 955 hectares (2,360 acres)? *A: c) 1pt*



4. Threatened Skylarks (*pictured*) are currently ground-nesting in open areas of Richmond Park (*dogs must be kept on leads!*) These special birds sing a gorgeous song which has inspired Britain's favourite piece of classical music **The Lark Ascending** (see <https://www.classicfm.com/radio/hall-of-fame/uk-favourite-pieces-classical-music-revealed/>). Can you name the composer?

A: Ralph Vaughan Williams; 1pt

5. What is the beautiful butterfly (*pictured right*)? Clue: you could say it's head of the Royal Navy! *A: Red Admiral; 1pt*
6. How many people visit Richmond Park each year? Is it a) 3m+; b) 4m+; c) 5m+ *A: c), 5 m+, 1pt.*



7. With the Isabella Plantation currently closed due to the COVID-19 pandemic, none of us are able to visit it in its glory at this time of year.....but we can still enjoy a few memories and, indeed, test them as well! See if you know – or can work out – the names of each of these trees....and here are a few clues: A is very useful if your visit to the plantation provokes your hayfever! B, the season for the English ones is just starting and they're great with cream. C, this is rather spooky with a nice bit of nut! 1 pt each, *A: A= Handkerchief Tree; B= Strawberry Tree; C= Witch Hazel; max 3 pts*



8. Isabella Plantation is most famous for a wide range of colourful flowering evergreen shrubs which blossom brilliantly during late April and into early summer. They make up the National Collection of the (Ernest) Wilson 50 species. What are they called and from which country did Ernest collect them? *A: Azaleas; Japan; 1 pt each, max 2 pts*

9. The Royal Parks charity works hard to manage and maintain Richmond Park for our enjoyment. How many Royal Parks are there? a) 5; b) 8; c) 10? *A: 8; 1pt; there are two locations that are not parks.*

10. Do you know the name of the famous London Cemetery that the Royal Parks also manages? Clue, it's right next to Stamford Bridge football stadium. *A: Brompton Cemetery, 1 pt*

11. These amazing creatures (right, found carefully nesting in rotting wood) grow up to be fearsome black insects that roam Richmond Park. Do you know the name of the adult creatures? *A: Stag Beetles; 1 pt*



12. True or False? Queen Elizabeth, The Queen Mother (who died in 2002 aged 101) lived in Richmond Park for two years. *A: True, 1 pt.*

13. True or False? Richmond Park has its own police force. *A: False; 1 pt*

14. Pictured right, what is this yellow-flowered spiky shrub found in several



locations a few hundred yards from Richmond Gate? (It's great for birds and other wildlife and The Friends funded the railing to help protect it). *A: Gorse; 1pt*

15. Poet's Corner in Pembroke Lodge Gardens has a memorial dedicated to James Thomson, a Scottish poet and playwright who lived in Richmond and died in 1748. His most famous and very patriotic work is set to stirring music and performed every year in the Royal Albert Hall. Do you know what it is called? *A: Rule Britannia; 1pt*



16. The man pictured left is more usually known as singer and front man for one of the world's premier rock bands. Here he is in a film which was partially shot in Richmond Park and released in 1970. Who is he and for a bonus point, what was the name of the film? *A: Mick Jagger; Performance; 1pt each, max 2 pts*

17. The handsome young man below (not the fluffy one with big ears!) is very strongly associated



with Richmond Park and his birthday is next month. Who is he? (Picture Getty Images/Smooth Radio) *A: Sir David Attenborough; 1pt.*

18. This rather poisonous but colourful spotted mushroom has starred in Disney's Fantasia, the Mario series of video



games, countless fairy tales and, of course, in our film about Richmond Park; do you know it's most common name? *A: Fly Agaric; 1 pt.*

19. With spring truly sprung, many trees are bursting their buds and springing into life. Can you identify which tree is bursting through (right) with these young leaves and flowers? (Clue: their seed 'keys' fly like helicopters!) *A: Sycamore; 1 pt.*



20. The Tamsin Trail (the shared walking/jogging & cycling gravel trail around the Park's perimeter) was funded by a well-known commercial property developer, Peter Beckwith. A bridge on the trail is named after him and



has a milestone next to it (see photo left). a) when (to the nearest five years)

was the Trail built and b) near which gate is the bridge? *A: 1997; Roehampton Gate; 1 pt each (2 pts max)*

21. Over the last five years the Friends and the Visitor Centre have funded 3

rafts on Pen Ponds to help a species of bird breed there (see picture right).

Which bird is it? *A: Common Tern; 1pt*



22. And finally, to stimulate your minds and make you think deeply, what philosopher (considered one of the greatest of the 20th Century) lived at Pembroke Lodge? *A: Bertrand Russell; 1 pt.*

A maximum of 27 points can be scored: how many can you get?

Good luck, hope you enjoyed it!

