

Richmond Park Bird Brains quiz

127 wonderful bird species of all shapes, sizes, colours and habits were recorded in Richmond Park in 2019. Can you identify these beautiful birds?

(1 point per answer unless indicated otherwise)

***Supping, swooping, singing and just hanging out:
meet Richmond Park's remarkable birds!***

Most birds drink water, some drink *salt* water and a few almost never drink any water at all. Those that do imbibe have some very different ways of supping. Match the bird to how it drinks, 1 point (maximum 5 points) for each correct answer,;

1. Hardly ever drinks any water?
2. Drinks water by bending down, filling its beak and lifting its head to swallow?
3. Drinks fresh or sea water?
4. Uses it's beak like a straw to suck up the water?
5. Swoops down over water and gulps water in flight?



A



B



C



D



E

(Pictures from RSPB website)

6. Every spring, Swallows fly 6,000 miles from sub-Saharan Africa to Britain (including Richmond Park!). To the nearest 50 miles, how far can they fly each day? 1 point
7. Larger Swifts (right) make a similar journey but do you know how far they can fly in a day? For a 2nd point, what is their maximum flying speed (a motorway limit!)? 1 point



8. What is this bird (left) doing? For a bonus point, what's it's name? Up to two points.
9. The bird pictured (right) is the smallest bird in Britain. Does it weigh the same as a 5p, 20p or £1 coin? 1 point



10. The handsome couple on the right are ubiquitous around the Park. They are in the Corvid



or Crow family, are highly intelligent and frequently bond for life. You'll often see them around Pembroke Lodge happily begging crumbs from humans. What is the name of these cheeky birds? 1 point

11. All birds have a scientific name (Latin or Greek) to distinguish and describe them and identify their genus. Some seem weird or funny in English. For example the Thrush family bears the unfortunate designation of 'Turdus'! Can you match these Latin names to the bird? 1) *Pica pica*; 2) *Passer domesticus*; 3) *Branta canadensis* 1 point each correct bird.



A



B



C

12. Both these birds have a close inter-dependence with the parasitic plant pictured (below right). The birds love the berries and they wipe their beaks and poo the seeds in places where the plant loves to grow. For three points, can you name each bird and the plant, strongly associated with Christmas and New Year! (Bird clues: the smaller bird's head is its name and the bigger speckled bird's name is part of the plant's name!)



13. The shy but beautiful member of the Corvid (Crow) family, left, also has a close inter-dependence with a favourite species of Richmond Park tree (pictured). For two points, do you know the name of the bird and what it does with the fruit of this tree?



14. Many birds have popular, 'folk' or nicknames often started in certain regions. Perhaps the most famous is Robin Redbreast which has the proper name of European Robin. Can you match these nicknames to the birds pictured below? *Pictures from RSPB website*

a) Darty; b) Goldy; c) Jenny; d) Yaffle; e) Sea Swallow 1 point for each correct answer, max 5 points.



A



B



C



D



E

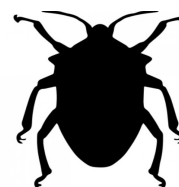
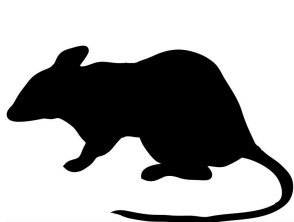
15. The bird pictured right is famous for its beautiful continuous song as it flies and seemingly hovers above and returns to ground with its tail high. 'Red' listed due to seriously declining numbers, it nests on the ground in Richmond Park but is highly sensitive to disturbance by uncontrolled dogs. What is it? 1 point





16. A famous 1969 British film classic, directed by Ken Loach and written by Barrie Hinds, featured the story of a young boy befriending and training a falcon. What was the species of falcon (often seen hovering for prey in Richmond Park) and the title of the film? Max 2 points. (Picture from www.eyeforfilm.co.uk)

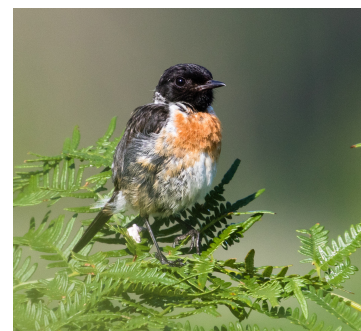
17. Which common, tall, grey, white and black wading bird includes all these silhouetted creatures in its diet? 1 point.



18. Which one of these stunning, exotic birds has *never* been spotted in Richmond Park? 1 point; bonus point if you can name any 3 of the birds pictured.



19. The lovely small bird, pictured right, was featured in our film presented by David Attenborough (www.youtube.com/watch?v=LMGKSwqryso&t=159s) and can be seen frequently around the Pen Ponds area, sitting up on the bracken. Do you know what it's called? 1 point



20. Most owls are nocturnally active but there are both daytime (or diurnal) hunters and some active at dusk (crepuscular).



Richmond Park has two resident owl species pictured left. Can you identify the two species for 1 point each (clue, one of them starred in our David Attenborough film!) and, for 1 point, which is nocturnal and which diurnal?

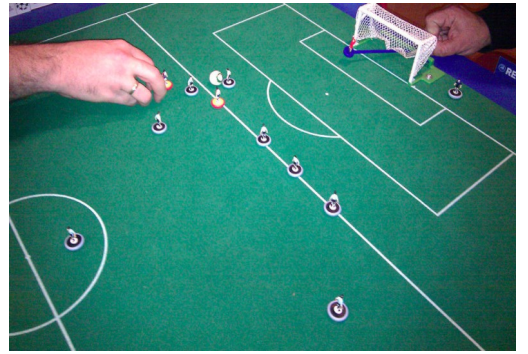
21. Do you know what the curious object pictured right is? It's to help a seasonal visitor to the Park that we've seen pictured in a previous question. 1 point



22. Which rather noisy birds are seen – and especially heard – all over the Park but at dusk leave en masse to roost elsewhere? 1 point



23. This small falcon seen in Richmond Park (*not* the one at Q16) has stunning aerial skills and is able to catch fast birds and flying insects (such as dragonflies) on the wing. For 1 point, what is it? For a 2nd point, its Latin name is the same as this table



top football game; can you name the game? *(Bird picture from <http://legarrique.blogspot.com/>)*

A maximum of 38 points can be scored: how many can you get?

Good luck, hope you enjoyed it!

Help protect Richmond Park's wonderful wildlife.

Join the Friends of Richmond Park now from just £10 per year.

Members enjoy weekly bird and nature walks and talks in the Park, receive membership bulletins and a printed newsletter and are invited to special events for adults and children. Don't miss out.

www.frp.org.uk/membership



Bird drawings used in this quiz are all taken from the excellent RSPB website, www.rspb.org.uk which includes a guide to British birds.